

ELEVATOR READY INC.
ELEVATORS FOR THE HOME

SHOP DRAWING NAME

ARCHITECT

GENERAL CONTRACTOR

EQUIPMENT INSTALLED BY
ELEVATOR READY INC.
5060 RITTER ROAD SUITE 3
MECHANICSBURG, PA 17055
TOLL FREE 888-849-4377
FAX 717-697-3740
EMAIL pauc@elevatorready.com

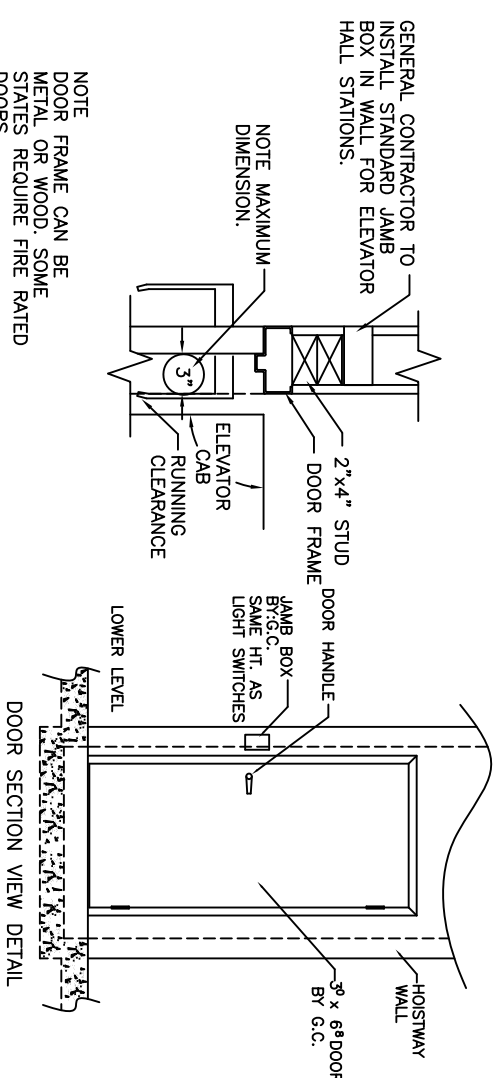
SPECIFICATIONS

3 LANDING
"ELEVETTE" 200
CAR 38'Dx50'Wx7'-0"H CODE(S) 5
CAPACITY 500 LBS. AT 30 F.P.M.
2 CABLES 5,700 LBS. T.S. IMP. PLOW
STEEL 1/4" x 8 x 19 IWRC
CAR CONSTRUCTION: 3/4" WOOD VENEER
COLOR/PANEL SELECTION: PLEASE ADVISE
ALL DOORS INTERLOCKED
MACHINE LIMIT
SOUND INSULATING BASE
TELEPHONE CORD
(1) DOWN TYPE LIGHT
STEEL DOME
FLOODING GATE
GATE SAFETY BAR
EMERGENCY LIGHT AND ALARM
ALARM BELL
IN USE LIGHTS
ARRIVAL LIGHTS
HANDRAIL(S) 1. CBRASS 2. WOOD
BUFFER SPRING
KEYSWITCH OPERATION
STABILIZER
HALF TROLLEY
WHEELCHAIR HT. CAR CONTROLS
LIGHTED BUTTONS
TELEPHONE CABINET

NOTICE TO ELECTRICAL CONTRACTOR:
BRING 4 #10 WIRES TO DISCONNECT SWITCH, (2)-110, (1)-NEUTRAL, (1)-GROUND, 1 1/2 HP. MOTOR 220 VOLTS 1 PHASE 60 CYCLE
10 AMPS RUN 50 AMPS START
FUSE 15 AMP SLD BLD
30 AMP MAIN LINE FUSE
NOTE TO ELEVATOR CONTRACTOR OR HIS REPRESENTATIVE: ALL ELECTRICAL WIRING MUST BE DONE BY A JOURNEYMAN MECHANIC AND MUST MEET ALL NATIONAL, STATE, AND LOCAL CODES.
NOTE: ALL HOISTWAY AND MACHINE ROOM CONSTRUCTION MUST COMPLY WITH NATIONAL, STATE, AND LOCAL CODES. PLEASE ADVISE INCA OF ANY CHANGES NEEDED TO THE DRAWING FOR COMPLIANCE IN YOUR AREA.
SWING TYPE SHAFT DOORS BY OTHERS

DEALER P.O. #
DRAWN BY: CHANCE
DATE:
DRAWING IDENTIFICATION NUMBER

WD CODES BHL



DOOR DETAILS

NOTE
DOOR FRAME CAN BE METAL OR WOOD. SOME STATES REQUIRE FIRE RATED DOORS.

GENERAL CONTRACTOR TO INSTALL STANDARD JAMB BOX IN WALL FOR ELEVATOR HALL STATIONS.

NOTE MAXIMUM DIMENSION.

2"x4" STUD

DOOR FRAME

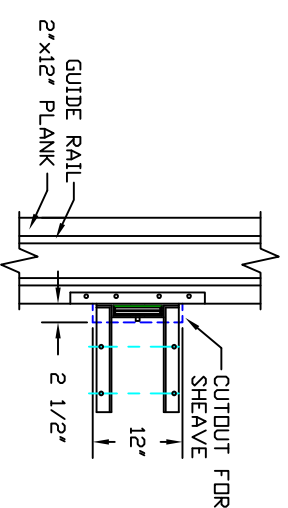
ELEVATOR CAB

RUNNING CLEARANCE

3"

NOTE

DOOR FRAME CAN BE METAL OR WOOD. SOME STATES REQUIRE FIRE RATED DOORS.



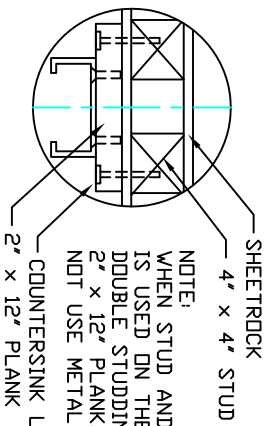
CUTOFF DETAIL

GUIDE RAIL

2"x12" PLANK

2 1/2"

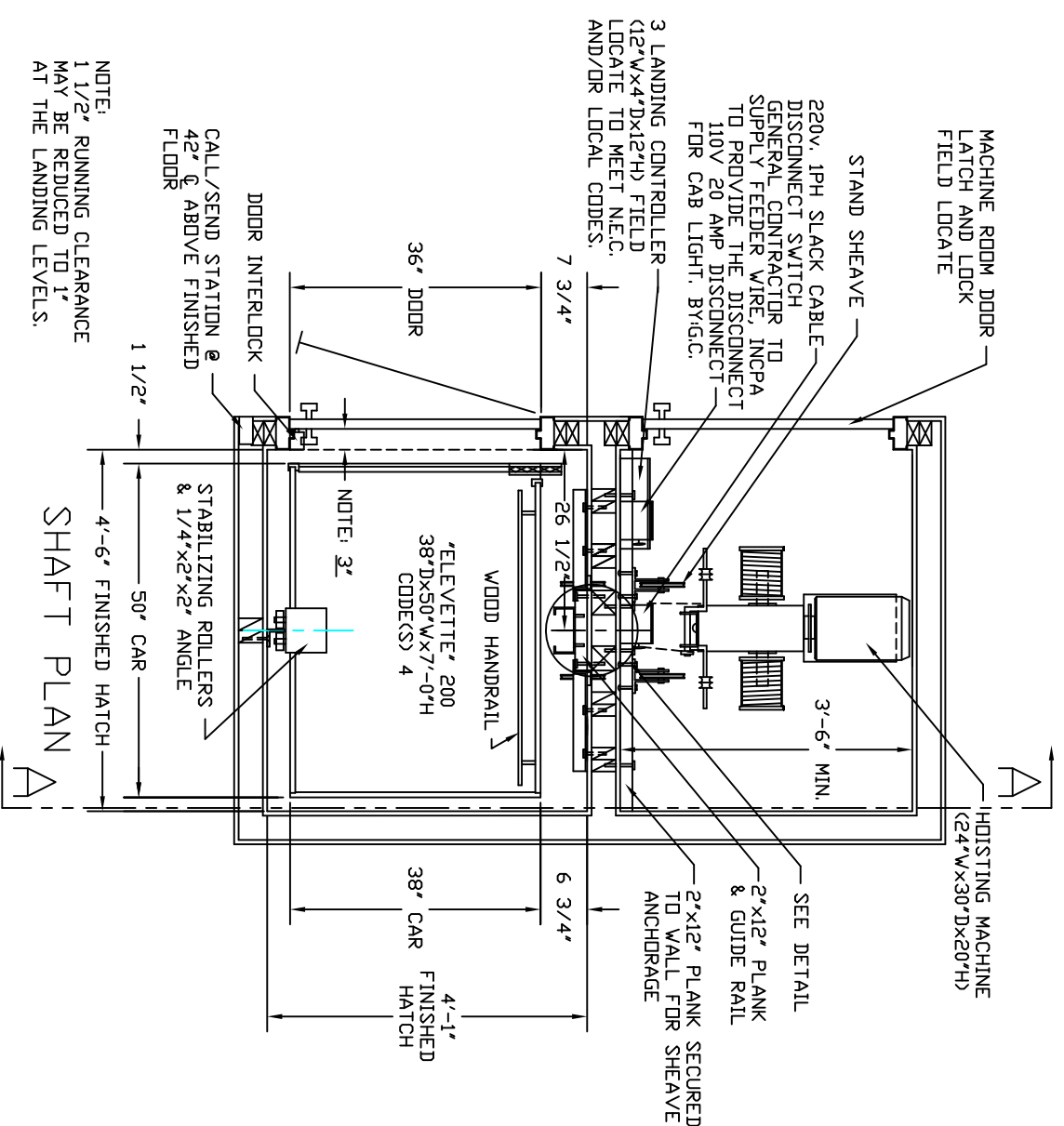
- TECHNICAL DATA:**
1. REACTIONS ON ALL SHEAVES AND MOUNTINGS STATIC = 1,100 LBS. IMPACT = 2,200 LBS.
 2. FASTENING OF HOISTING MACHINE TO CONCRETE 1/2" x 3" HILTI BOLTS (OR EQUAL)
 3. RAIL FASTENING TO 2"x12" PLANK #14 x 1 3/4" TYPE A SMS. RAIL IS PRE-DRILLED AT FACTORY.
 4. BOLT FASTENING OF CAR TO TROLLEY 1/2" - 13 x 4" SOCKET HD CAP SCREWS



DETAIL

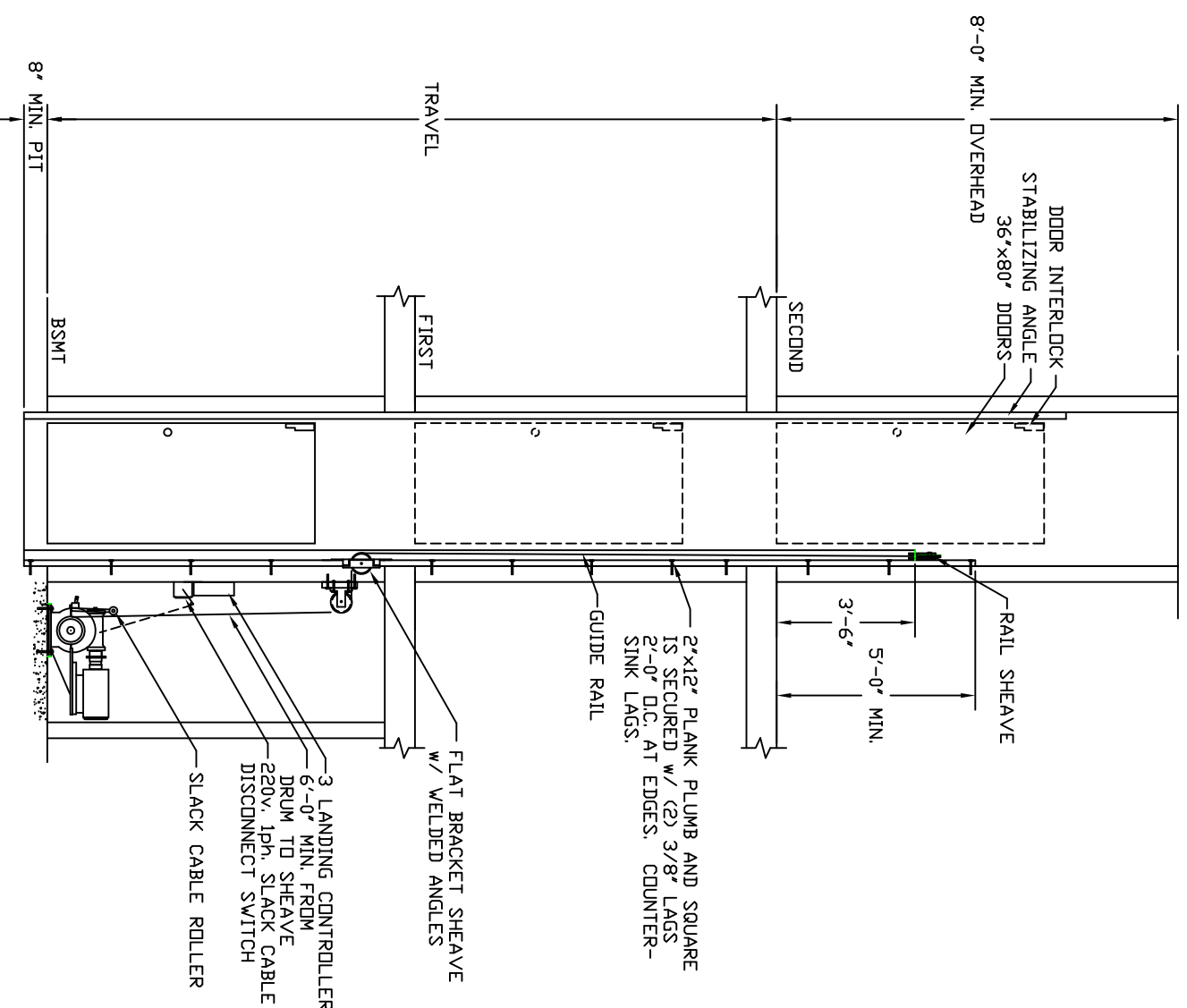
NOTE:
WHEN STUD AND SHEETROCK CONSTRUCTION IS USED ON THE GUIDE RAIL SUPPORT WALL DOUBLE STUDDING IS NEEDED BEHIND THE 2" x 12" PLANK. COUNTERSINK LAGS, DO NOT USE METAL STUDS.

COUNTERSINK LAGS
2" x 12" PLANK



SHAFT PLAN A-A

NOTE:
1 1/2" RUNNING CLEARANCE MAY BE REDUCED TO 1" AT THE LANDING LEVELS.



SECTION A-A