

ELEVATOR READY INC.
ELEVATORS FOR THE HOME

SHOP DRAWING NAME

ARCHITECT

GENERAL CONTRACTOR

EQUIPMENT INSTALLED BY
ELEVATOR READY INC.
5060 RITTER ROAD SUITE 3
MECHANICSBURG, PA. 17055
TOLL FREE 888-849-4377
FAX 717-697-3740
EMAIL paulc@elevatortoready.com

SPECIFICATIONS

2 LANDING

"ELEVETTE" 3400

CAR 38'Dx50'Wx7'-0"H CODE(S) 4
CAPACITY 500 LBS. AT 30 F.P.M.
2 CABLES 5,700 LBS. T.S. IMP. PLOW
STEEL 1/4" x 8 x 19 IWRC

CAR CONSTRUCTION: 3/4" WOOD VENEER
COLOR/PANEL SELECTION: PLEASE ADVISE

- ALL DOORS INTERLOCKED
- MACHINE LIMIT
- SOUND INSULATING BASE
- TELEPHONE CORD
- (1) DOWN TYPE LIGHT
- STEEL DOME
- FLOATING GATE
- GATE SAFETY BAR
- EMERGENCY LIGHT AND ALARM
- ALARM BELL
- IN USE LIGHTS
- ARRIVAL LIGHTS
- HANDRAIL(S) 1" BRASS x WOOD
- BUFFER SPRING
- KEYSWITCH OPERATION
- STABILIZER
- HALF TROLLEY
- WHEELCHAIR HT. CAR CONTROLS
- LIGHTED BUTTONS
- TELEPHONE CABINET

NOTE: TO ELECTRICAL CONTRACTOR:
BRING 4 #10 WIRES TO DISCONNECT SWITCH, (2)-110, (1)-NEUTRAL, (1)-GROUND, 1 1/2 HP. MOTOR 220 VOLTS 1 PHASE 60 CYCLE
10 AMPS RUN 50 AMPS START
FUSE 15 AMP SLD BLD
30 AMP MAIN LINE FUSE

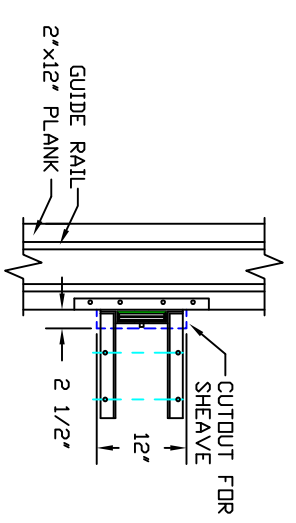
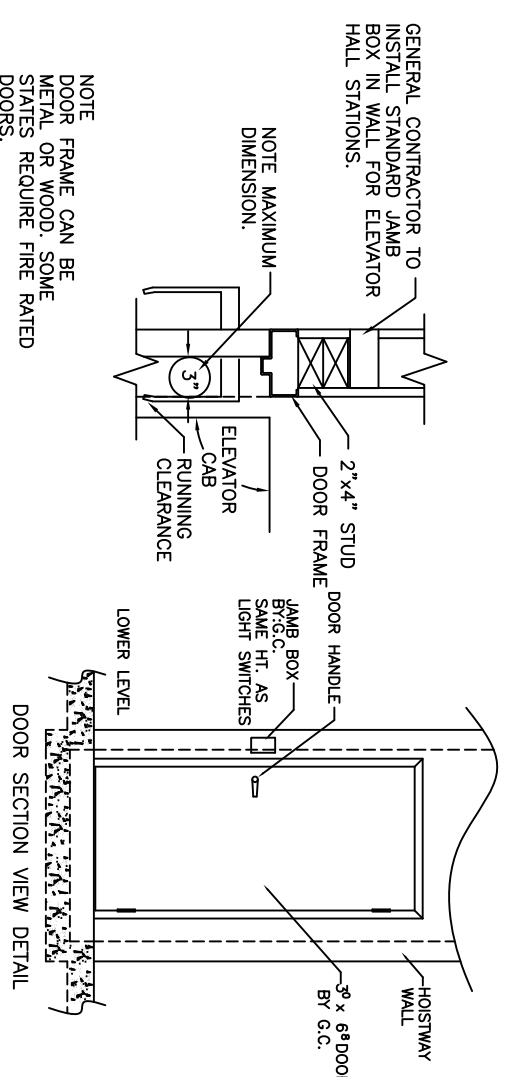
NOTE TO ELEVATOR CONTRACTOR OR HIS REPRESENTATIVE: ALL ELECTRICAL WIRING MUST BE DONE BY A JOURNEYMAN MECHANIC AND MUST MEET ALL NATIONAL, STATE, AND LOCAL CODES.

NOTE: ALL HOISTWAY AND MACHINE ROOM CONSTRUCTION MUST COMPLY WITH NATIONAL, STATE, AND LOCAL CODES. PLEASE ADVISE IN CDA OF ANY CHANGES NEEDED TO THE DRAWING FOR COMPLIANCE IN YOUR AREA.
SWING TYPE SHAFT DOORS BY OTHERS

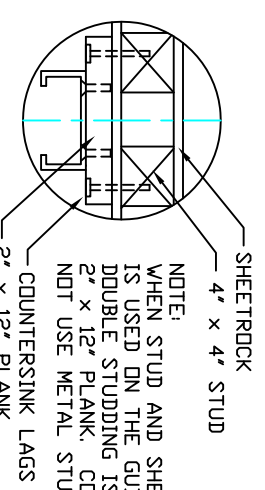
DEALER P.O. #
DRAWN BY: CHANCE
DATE: 12/2/02

DRAWING IDENTIFICATION NUMBER

TYPWD CODE4 BH



DETAIL



- TECHNICAL DATA:**
- REACTIONS ON ALL SHEAVES AND MOUNTINGS
STATIC = 1100 LBS.
IMPACT = 2,200 LBS.
 - FASTENING OF HOISTING MACHINE TO CONCRETE
1/2" x 3" HILTI BOLTS (OR EQUAL)
 - RAIL FASTENING TO 2" x 12" PLANK
#14 x 1 3/4" TYPE A SMS. RAIL IS PRE-DRILLED AT FACTORY.
 - BOLT FASTENING OF CAR TO TROLLEY
1/2" - 13 x 4" SOCKET HD CAP SCREWS

NOTE: WHEN STUD AND SHEETROCK CONSTRUCTION IS USED ON THE GUIDE RAIL SUPPORT WALL DOUBLE STUDDING IS NEEDED BEHIND THE 2" x 12" PLANK. COUNTERSINK LAGS, DO NOT USE METAL STUDS.

