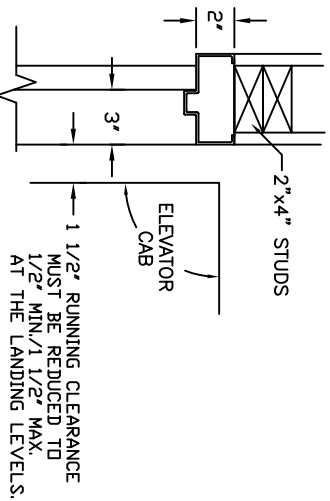
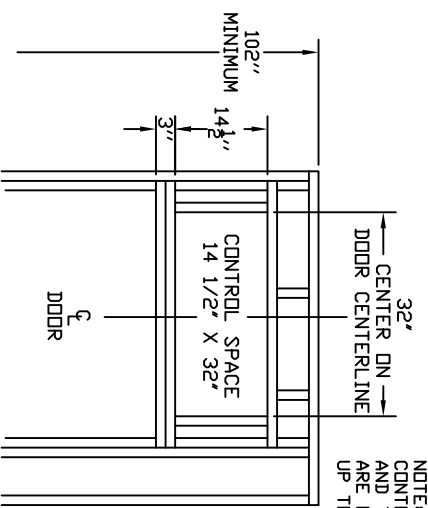


NOTE:
WHEN STUD AND SHEETROCK CONSTRUCTION IS USED ON THE RAIL BRACKET SUPPORT WALL DBL 2 X 6 STUDING IS NEEDED TO MOUNT THE RAIL BRACKETS. DO NOT USE METAL STUDS.

DETAIL

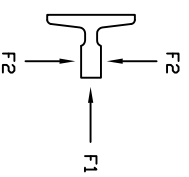


DOOR FRAME DETAIL



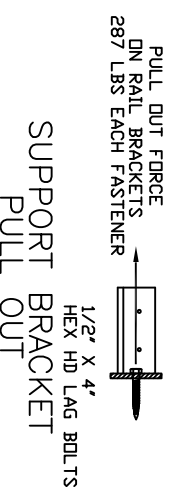
UPPER DOOR OVERHEAD FRAMING DETAIL

NOTE:
CONTROL SPACE MUST BE SQUARE AND TO SIZE. GIVEN DIMENSIONS ARE MINIMUM SIZE AND MAY BE UP TO 1/8\"/>



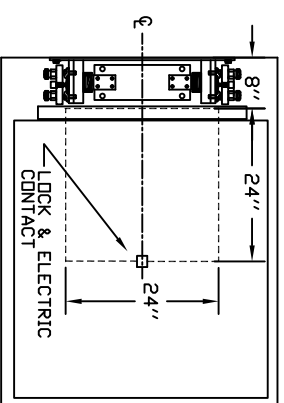
F1 = 242 LBF
F2 = 370 LBF

RAIL REACTIONS



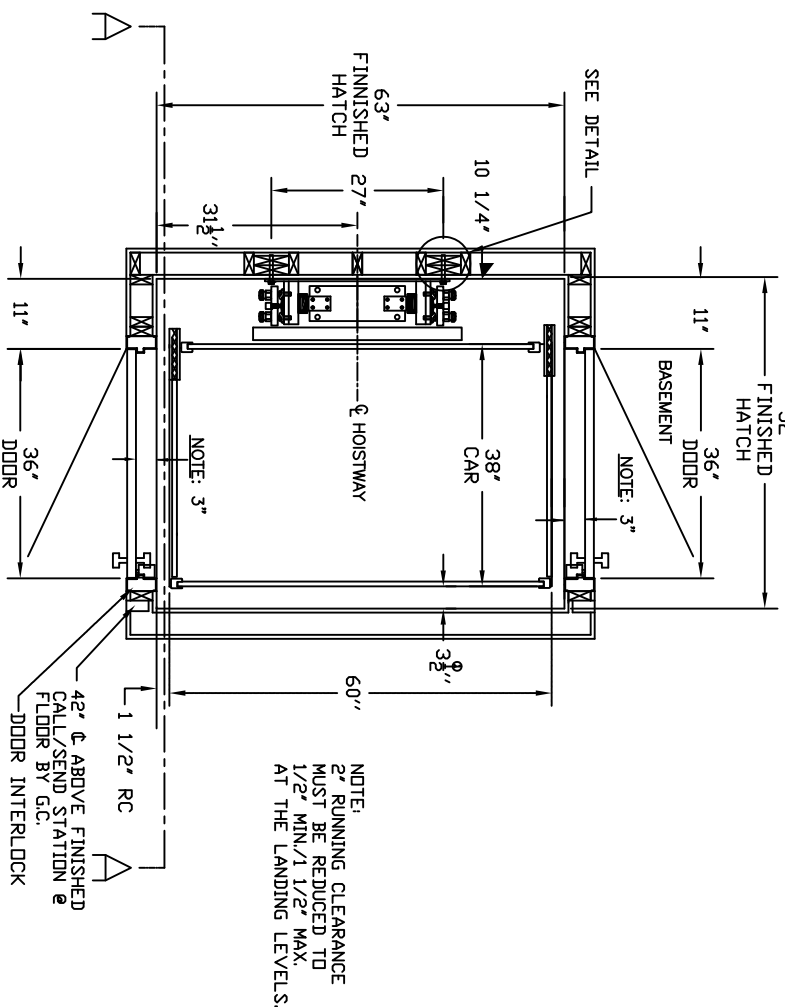
SUPPORT BRACKET PULL OUT

PULL OUT FORCE ON RAIL BRACKET'S 287 LBS EACH FASTENER

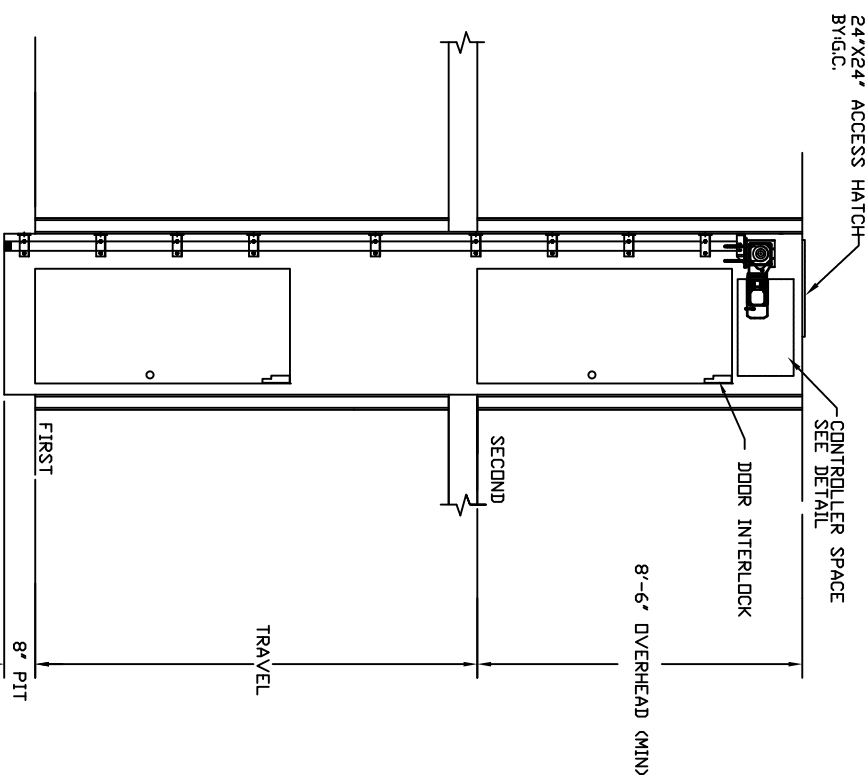


ACCESS HATCH

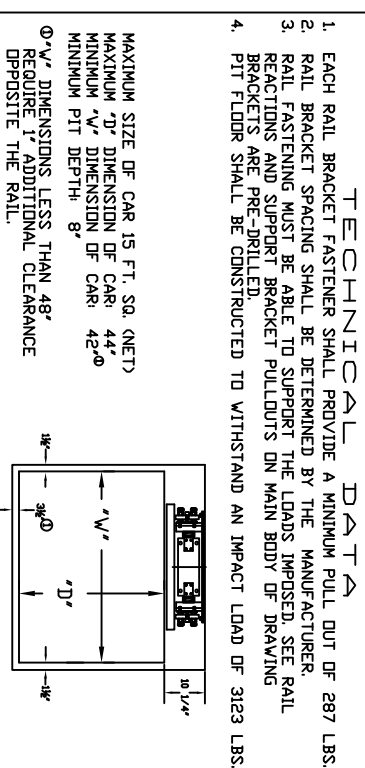
ACCESS HATCH BY:G.C.



HOISTWAY LAYOUT



SECTION A-A



ELEVATOR NOTES

- NOTICE TO ELECTRICAL CONTRACTOR:
 - ALL ELECTRICAL WIRING MUST BE DONE BY A JOURNEYMAN MECHANIC AND MUST MEET ALL NATIONAL, STATE, AND LOCAL CODES.
 - BRING (2) #10 W/GND FROM ELEVATOR DISCONNECT SWITCH LOCATED NEAR RESIDENCE INCOMING POWER PANEL (240V, NEUTRAL, GROUND) TO THE TOP OF THE HOISTWAY. DISCONNECT IS SUPPLIED BY OTHERS AND MUST BE LOCKABLE.
 - BRING (2) #12 W/GND FROM A SEPARATE DEDICATED DISCONNECT NEAR THE RESIDENCE TO THE TOP OF THE HOISTWAY. UTILITY LIGHT, GFI RECEPTACLE, AND LOCKABLE DISCONNECT TO BE SUPPLIED BY OTHERS.
 - REQUIRED LOW VOLTAGE WIRING IS SUPPLIED BY MANUFACTURER. ALL EXTENSIONS ADDITIONS, ETC. SHALL BE DONE WITH THE SAME SIZE AND TYPE OF WIRE AS ORIGINALLY SUPPLIED BY THE MANUFACTURER.



- NOTICE TO G.C.
 - ALL HOISTWAY CONSTRUCTION MUST COMPLY WITH NATIONAL, STATE, AND LOCAL CODES. HOISTWAY MUST BE PLUMB AND STRAIGHT FROM TOP TO BOTTOM WITH NO PROJECTIONS INTO THE HOISTWAY.
 - PLEASE ADVISE INCGRA OF ANY CHANGES NEEDED TO THE DRAWING FOR COMPLIANCE IN YOUR AREA.
 - NO OTHER WIRING OR PIPING NOT PART OF THE ELEVATOR SYSTEM SHALL BE PLACED IN THE HOISTWAY.
 - SWING TYPE SHAFT DOORS WITH LATCHING HARDWARE TO BE SUPPLIED BY OTHERS.
 - PROVIDE A 24\"/>

- NOTICE TO INSTALLER (MANDATORY EQUIPMENT)
 - A TELEPHONE LINE SHALL BE SUPPLIED TO THE TOP OF THE HOISTWAY AND SHALL BE CONNECTED TO A 24 HOUR CENTRAL EXCHANGE.
 - ALL MEANS FOR ACCESS TO EQUIPMENT OR HOISTWAY SHALL BE PROVIDED WITH A LOCK AND ELECTRICAL CONTACT. ALL SHAFT DOORS MUST BE INTERLOCKED.

SPECIFICATIONS "ELEVETTE 200"

MRL CHAIN DRIVE
CAR SIZE OVERALL: 38 1/2x60"x7 1/4" LANDINGS SERVED: 2
CAPACITY: 950 LBS. INCGA CODES: 4 AND 5
SUSP MEANS: (2) #60 ROLLER CHAINS MAX. SPEED: 40 F.P.M

SHOP DRAWING NAME

ARCHITECT
GENERAL CONTRACTOR
EQUIPMENT INSTALLED BY
ELEVATOR READY INC.
5060 RITTER ROAD
MECHANICSBURG, PA. 17055
PHONE: 717-697-3780

INCLINATOR COMPANY OF AMERICA
HARRISBURG, PA.

APPROVAL # _____ REV. LEVEL _____
INCGA JOB # _____ REV. DATE _____

DRAWN BY CHANCE DATE 5/29/08
DRAWING IDENTIFICATION NUMBER
MRL_CODE4_5_60IN

APPROVED _____
APPROVED W/CHANGES _____
CHANGE/RESUBMIT _____