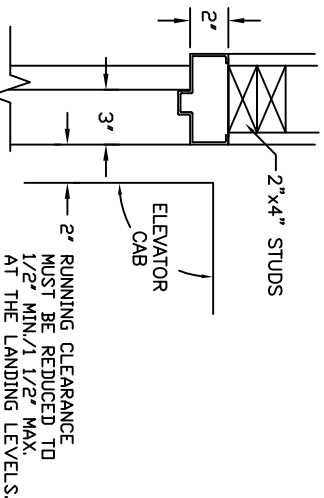
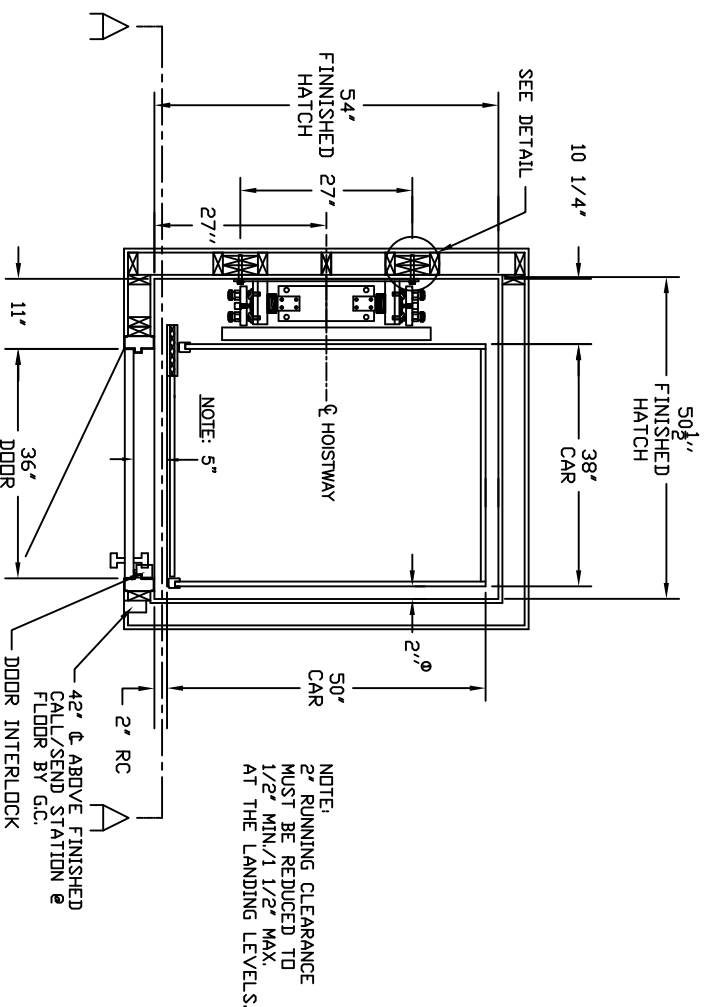


NOTE:  
WHEN STUD AND SHEETROCK CONSTRUCTION IS USED ON THE RAIL BRACKET SUPPORT WALL DBL. 2 X 6 STUDING IS NEEDED TO MOUNT THE RAIL BRACKETS. DO NOT USE METAL STUDS.

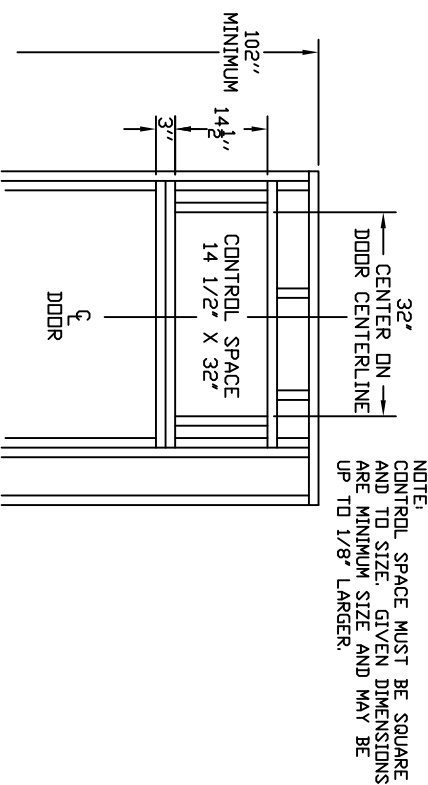
**DETAIL**



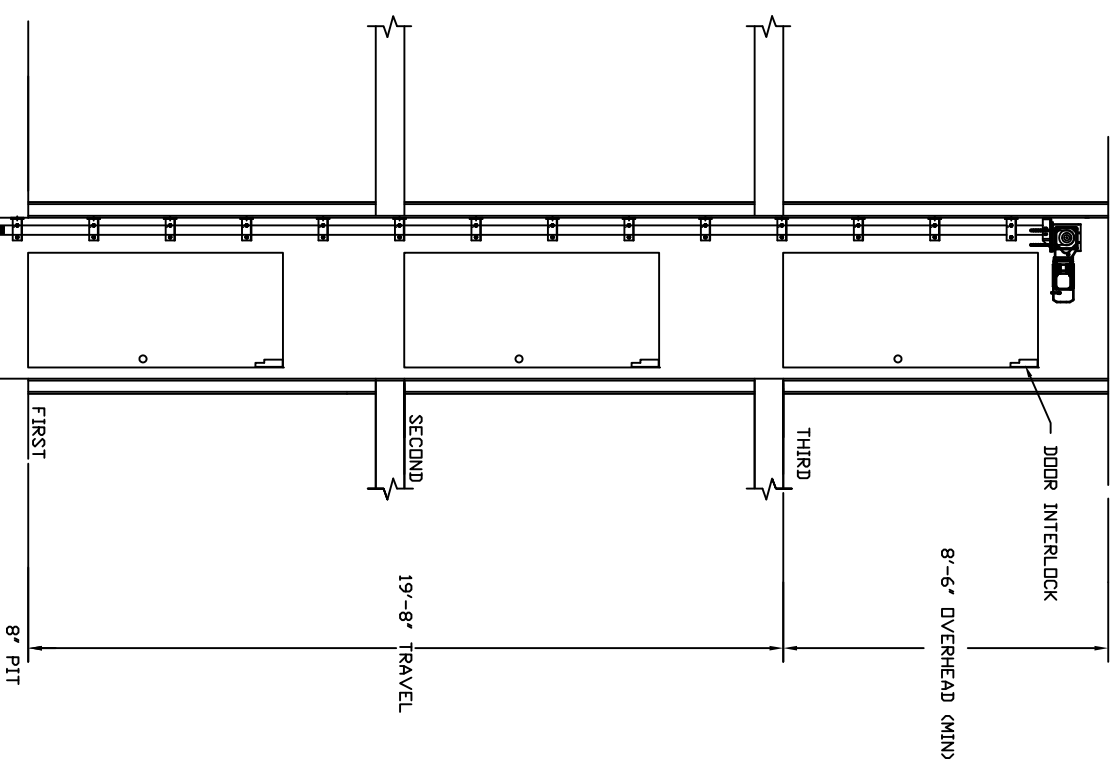
**DOOR FRAME DETAIL**



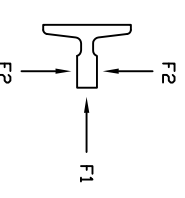
**HOISTWAY LAYOUT**



**UPPER DOOR OVERHEAD FRAMING DETAIL**

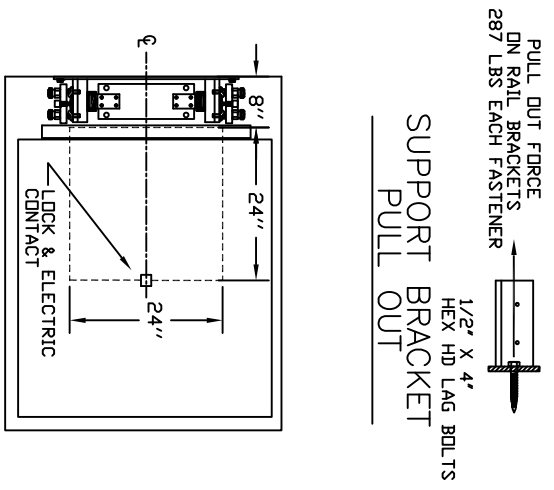


**SECTION A-A**



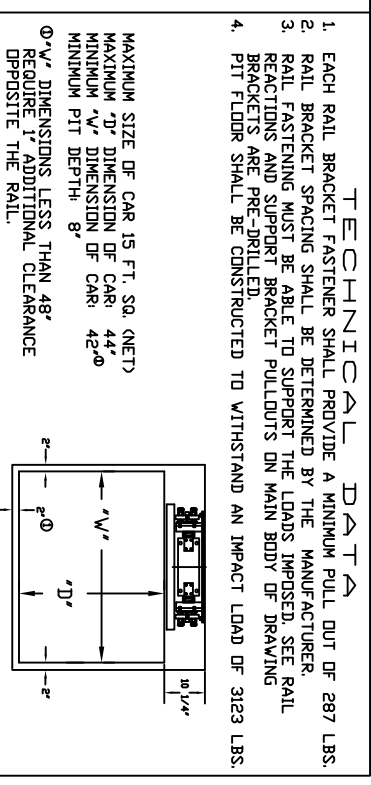
**RAIL REACTIONS**

F1 = 242 LBF  
F2 = 370 LBF



**ACCESS HATCH**

PULL OUT FORCE ON RAIL BRACKETS 287 LBS EACH FASTENER  
1/2" X 4" HEX HD LAG BOLTS  
SUPPORT BRACKET PULL OUT

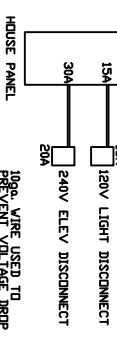


**TECHNICAL DATA**

- EACH RAIL BRACKET FASTENER SHALL PROVIDE A MINIMUM PULL OUT OF 287 LBS.
- RAIL BRACKET SPACING SHALL BE DETERMINED BY THE MANUFACTURER.
- RAIL FASTENING MUST BE ABLE TO SUPPORT THE LOADS IMPROSED. SEE RAIL BRACKETS AND SUPPORT BRACKET PULLOUTS ON MAIN BODY OF DRAWING BRACKETS ARE PRE-SPILLED
- PIT FLOOR SHALL BE CONSTRUCTED TO WITHSTAND AN IMPACT LOAD OF 3123 LBS.

**ELEVATOR NOTES**

- NOTICE TO ELECTRICAL CONTRACTOR:
  - ALL ELECTRICAL WIRING MUST BE DONE BY A JOURNEYMAN MECHANIC AND MUST MEET ALL NATIONAL, STATE, AND LOCAL CODES.
  - BRING (2) #10 W/GND FROM ELEVATOR DISCONNECT SWITCH LOCATED NEAR RESIDENCE INCOMING POWER PANEL (240V, NEUTRAL, GROUND) TO THE TOP OF THE HOISTWAY. DISCONNECT IS SUPPLIED BY OTHERS AND MUST BE LOCKABLE.
  - BRING (2) #12 W/GND FROM A SEPARATE DEDICATED DISCONNECT NEAR THE RESIDENCE TO THE TOP OF THE HOISTWAY. UTILITY LIGHT, GFI RECEPTACLE, AND LOCKABLE DISCONNECT TO BE SUPPLIED BY OTHERS.
  - REQUIRED LOW VOLTAGE WIRING IS SUPPLIED BY MANUFACTURER. ALL EXTENSIONS ADDITIONS, ETC. SHALL BE DONE WITH THE SAME SIZE AND TYPE OF WIRE AS ORIGINALLY SUPPLIED BY THE MANUFACTURER.



- NOTICE TO G.C.
  - ALL HOISTWAY CONSTRUCTION MUST COMPLY WITH NATIONAL, STATE, AND LOCAL CODES. HOISTWAY MUST BE PLUMB AND STRAIGHT FROM TOP TO BOTTOM WITH NO PROJECTIONS INTO THE HOISTWAY.
  - PLEASE ADVISE INCGA OF ANY CHANGES NEEDED TO THE DRAWING FOR COMPLIANCE IN YOUR AREA.
  - NO OTHER WIRING OR PIPING NOT PART OF THE ELEVATOR SYSTEM SHALL BE PLACED IN THE HOISTWAY.
  - SWING TYPE SHAFT DOORS WITH LATCHING HARDWARE TO BE SUPPLIED BY OTHERS.
  - PROVIDE A 24" X 24" ACCESS HATCH IN THE CEILING OF THE HOISTWAY TO FACILITATE INSTALLATION OF MACHINE AND EQUIPMENT. (SEE HATCH ACCESS PANEL) ACCESS HATCH MUST HAVE FLAME SPREAD RATE EQUIVELANT OR GREATER AS THE CEILING OF THE HOISTWAY.
  - LOW LYING AREAS MUST PROVIDE ADEQUATE DRAINAGE IN THE PIT TO PREVENT WATER FROM ACCUMULATING.
- NOTICE TO INSTALLER (MANDATORY EQUIPMENT)
  - A TELEPHONE LINE SHALL BE SUPPLIED TO THE TOP OF THE HOISTWAY AND SHALL BE CONNECTED TO A 24 HOUR CENTRAL EXCHANGE.
  - ALL MEANS FOR ACCESS TO EQUIPMENT OR HOISTWAY SHALL BE PROVIDED WITH A LOCK AND ELECTRICAL CONTACT. ALL SHAFT DOORS MUST BE INTERLOCKED.

**SPECIFICATIONS "ELEVETTE"**

MRL CHAIN DRIVE  
CAR SIZE OVERALL: 387x50"v"x7'H LANDING(S) SERVED: 3  
CAPACITY: 950 LBS. INCGA CODE(S): 5  
SUSP MEANS: (2) #60 ROLLER CHAINS MAX. SPEED: 40 F.P.M

SHOP DRAWING NAME  
XXXX RESIDENCE  
ARCHITECT

GENERAL CONTRACTOR

EQUIPMENT INSTALLED BY

ELEVATOR READY INC.  
5060 RITTER ROAD, SUITE 3  
MECHANICSBURG, PA. 17055

<b>INCLINATOR</b> COMPANY OF AMERICA HARRISBURG, PA.	APPROVAL #	REV. LEVEL
	INCGA JOB #	REV. DATE
DRAWN BY FMH	DWG. DATE	

APPROVED  
APPROVED W/CHANGES  
CHANGE/RESUBMIT

DRAWING IDENTIFICATION NUMBER  
**TYPICAL**