

ELEVATOR READY INC.
ELEVATORS FOR THE HOME

SHOP DRAWING NAME

PRIVATE RESIDENCE
HYDRAULIC ELEVATOR

ARCHITECT

NOT FOR COMMERCIAL
APPLICATION
GENERAL CONTRACTOR

EQUIPMENT INSTALLED BY:

ELEVATOR READY INC.
5060 RITTER ROAD
MECHANICSBURG, PA. 17055
PHONE 717-697-3780
TOLL FREE 888-849-4377

SPECIFICATIONS

3 LANDING
HYDRARIDE II
"ELEVETTE" 200

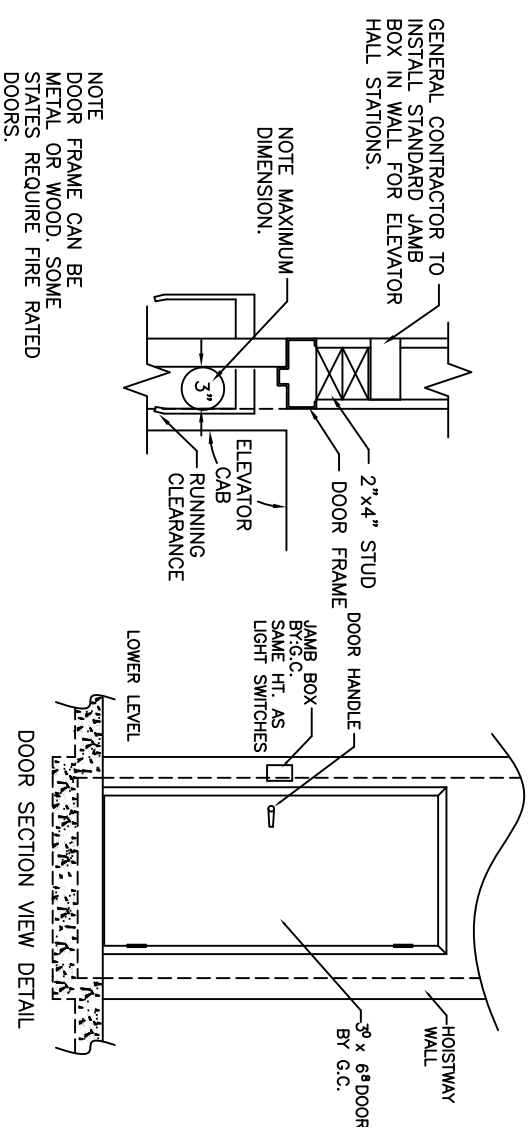
CAR 38"Dx50"Wx7'-0"H CODE(S) 4
CAPACITY 750 LBS. AT 30 F.P.M. ±4
2 CABLES 13,200 LBS. T.S. IMP FLOW
STEEL 3/8" x 8 x 19 WRC
CAR CONSTRUCTION: 3/4" HARDWOOD VENEER
COLOR/PANEL SELECTION: LIGHT OAK

- ALL DOORS INTERLOCKED
 - TELEPHONE CORD
 - DOWN LIGHT
 - FLOATING GATE
 - EMERGENCY LIGHT & ALARM
 - IN USE LIGHTS
 - ARRIVAL LIGHTS
 - HANDRAIL(S) 1" □ BRASS □ WOOD
 - GATE SAFETY BAR
 - WHISKER SWITCH
 - ALARM BELL
 - LIGHTED BUTTONS
 - BATTERY LOWERING
 - TELEPHONE CABINET
 - HALF TROLLEY
 - WHISKER SWITCH
 - PIT SWITCH
 - WHEELCHAIR HT. CAR CONTROLS
- NOTICE TO ELECTRICAL CONTRACTOR:
BRING 4 #10 WIRES TO DISCONNECT SWITCH: (2)-110, (1)-NEUTRAL, (1)-GROUND.
2 1/2 H.P. MOTOR 220 VOLTS 1 ph
FLA. 10
FUSE 15 AMP SLO BLO
30 AMP MAIN LINE FUSE
- NOTE TO ELEVATOR CONTRACTOR OR HIS REPRESENTATIVE: ALL ELECTRICAL WIRING MUST BE DONE BY A JOURNEYMAN MECHANIC AND MUST MEET ALL NATIONAL, STATE, AND LOCAL CODES.
- NOTE: ALL HOISTWAY AND MACHINE ROOM CONSTRUCTION MUST COMPLY WITH NATIONAL, STATE, AND LOCAL CODES. PLEASE ADVISE INCOA OF ANY CHANGES NEEDED TO THE DRAWING FOR COMPLIANCE IN YOUR AREA.
- SWING TYPE SHAFT DOORS BY OTHERS

DRAWING BY: *Ghans*

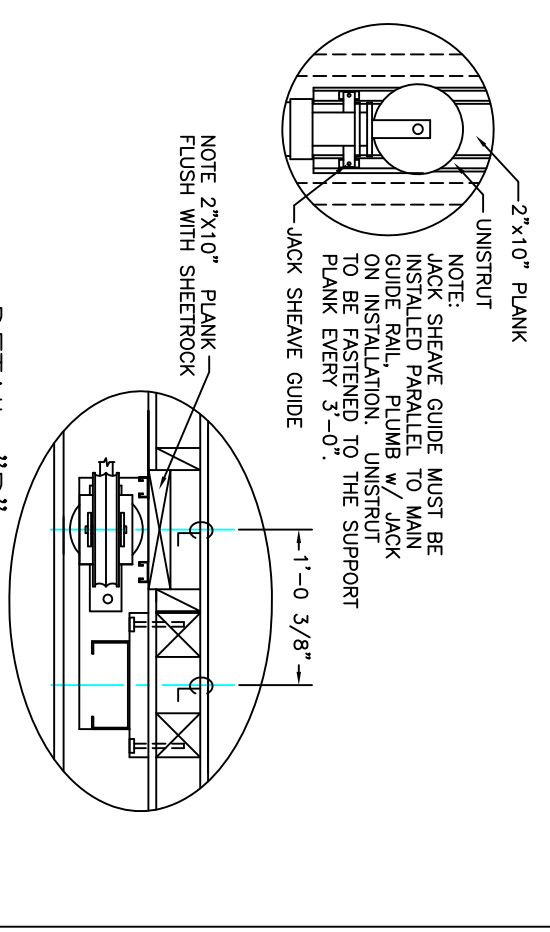
DRAWING IDENTIFICATION NUMBER

H2 31A CODE 4



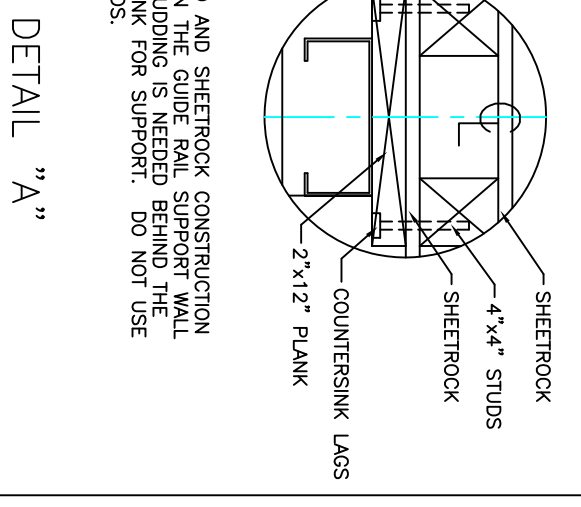
DOOR DETAILS

NOT FOR COMMERCIAL APPLICATION



DETAIL "B"

TYPICAL DRAWING NOT FOR CONSTRUCTION

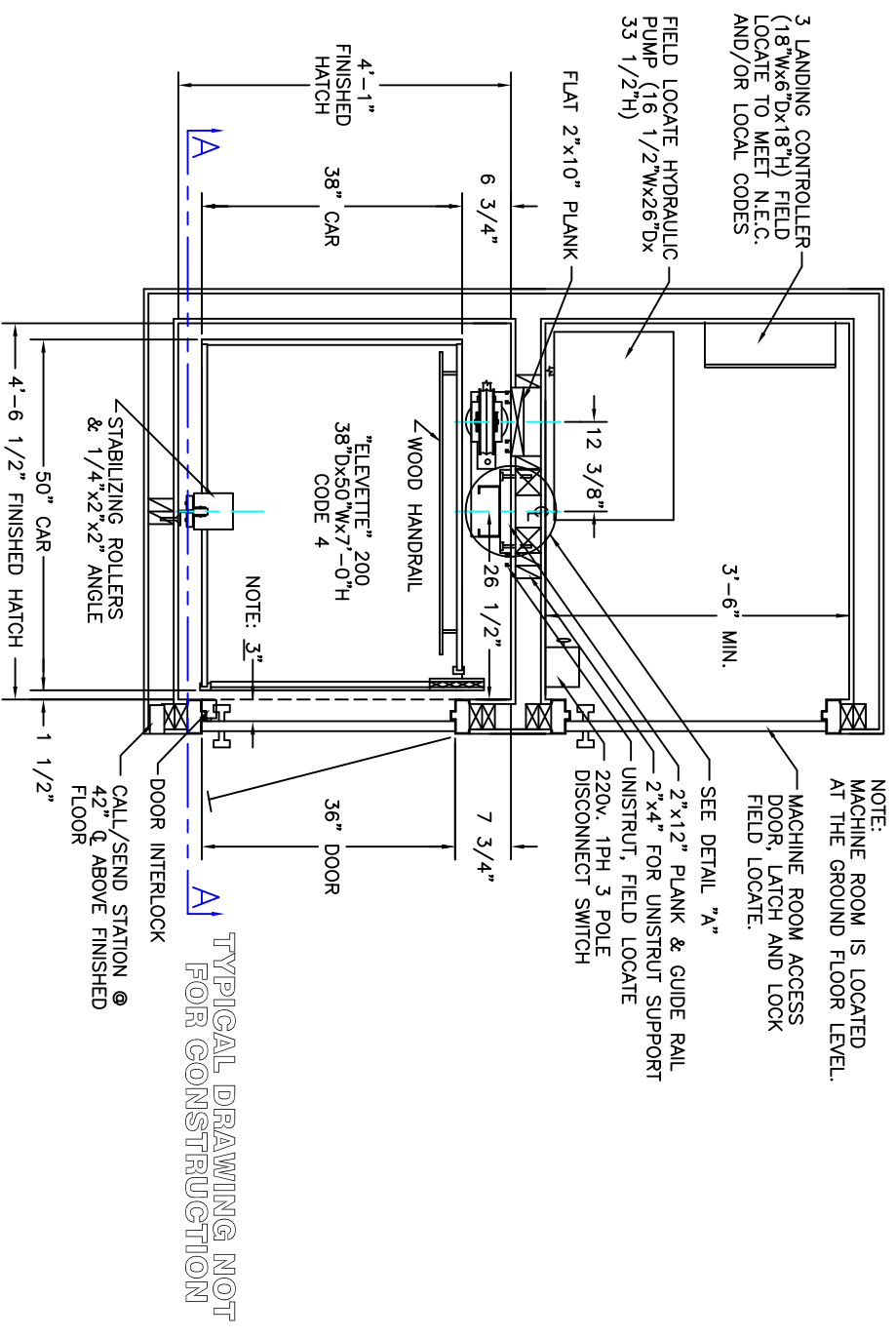


DETAIL "A"

NOTE: STUD AND SHEETROCK CONSTRUCTION IS USED ON THE GUIDE RAIL SUPPORT WALL DOUBLE STUDDING IS NEEDED BEHIND THE 2" x 12" PLANK FOR SUPPORT. DO NOT USE METAL STUDS.

PRIVATE RESIDENCE
HYDRAULIC ELEVATOR

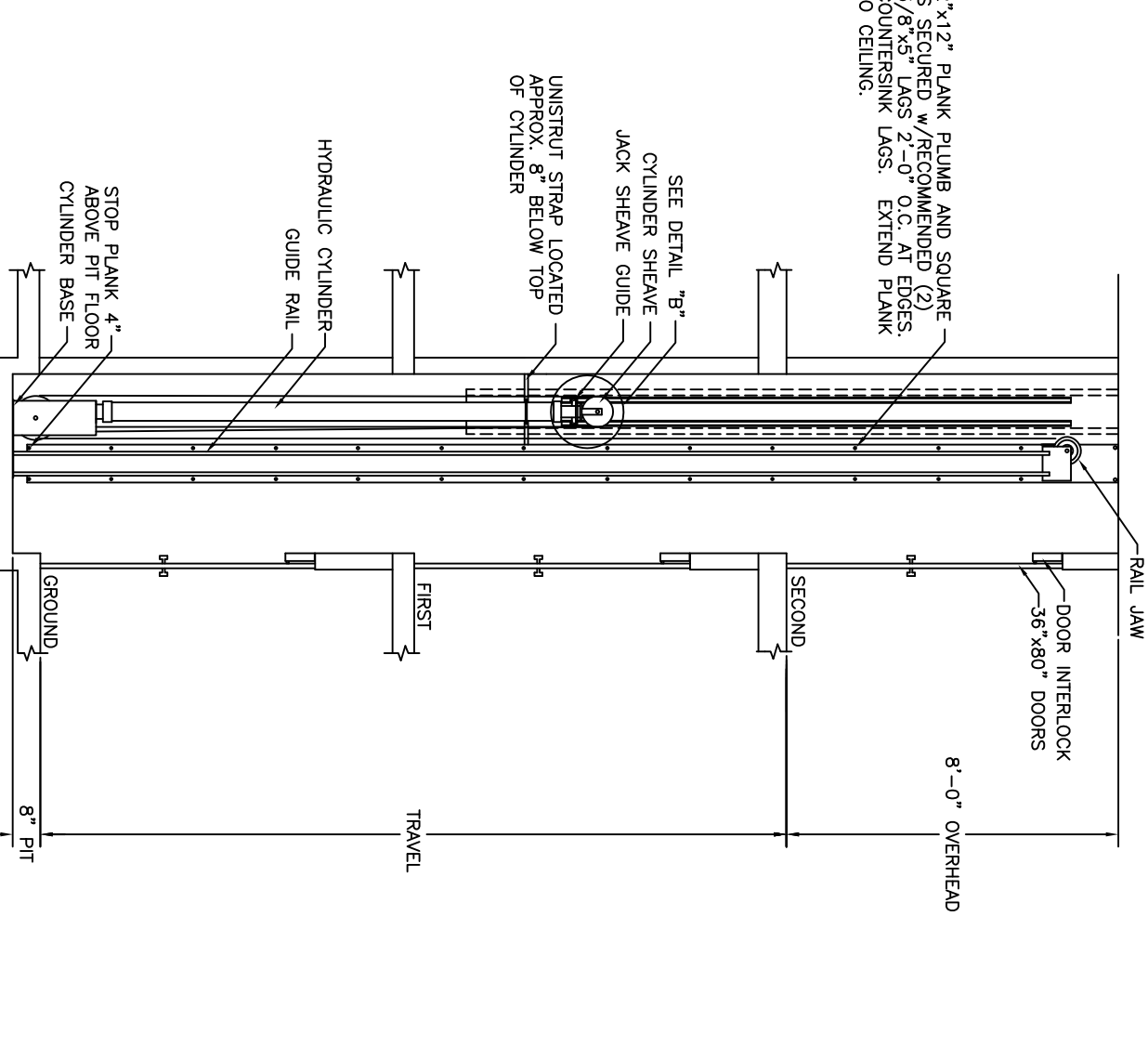
- TECHNICAL DATA:
- REACTIONS ON ALL SHEAVES AND MOUNTINGS STATIC = 1,350 LBS. IMPACT = 2,700 LBS.
 - RAIL FASTENING TO 2" x 12" PLANK #14 x 1 3/4" TYPE A S.M.S. RAIL IS PRE-DRILLED AT FACTORY.
 - BOLT FASTENING OF CAR TO TROLLEY 1/2" - 13 x 4" SOCKET HD CAP SCREWS



SHAFT PLAN

NOT FOR COMMERCIAL APPLICATION

SECTION A-A



PRIVATE RESIDENCE
HYDRAULIC ELEVATOR